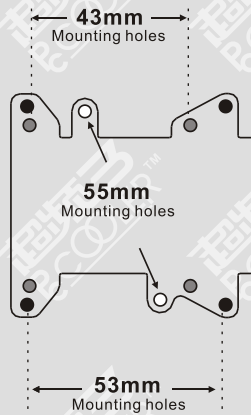


## 显卡孔位图



### 43mm 孔位

ATI Radeon 3800 Series  
ATI Radeon 4600 Series  
ATI Radeon 4800 Series  
NVIDIA GeForce4 FX 5700 Series  
NVIDIA GeForce4 FX 5900 Series  
NVIDIA GeForce 6600 Series  
NVIDIA GeForce 7600 Series  
NVIDIA GeForce 8600 Series  
NVIDIA GeForce 9600 Series

### 53mm 孔位

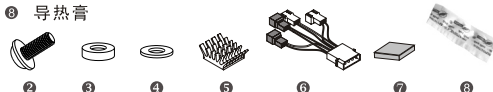
ATI Radeon X1800 Series  
ATI Radeon 2400 Series  
ATI Radeon 2600 Series  
NVIDIA GeForce 6800 LE/GT Series  
NVIDIA GeForce 6800 Series  
NVIDIA GeForce 6800 Ultra Series  
NVIDIA GeForce 7800 GT/GTX series  
NVIDIA GeForce 7900 GTX series  
NVIDIA GeForce 8400 series  
NVIDIA GeForce 8500 series  
NVIDIA GeForce 8600 GT/GTS/GTX series  
NVIDIA GeForce 8800 GT/GTS/GX2 series  
NVIDIA GeForce 9600 GT series

### 55mm 孔位

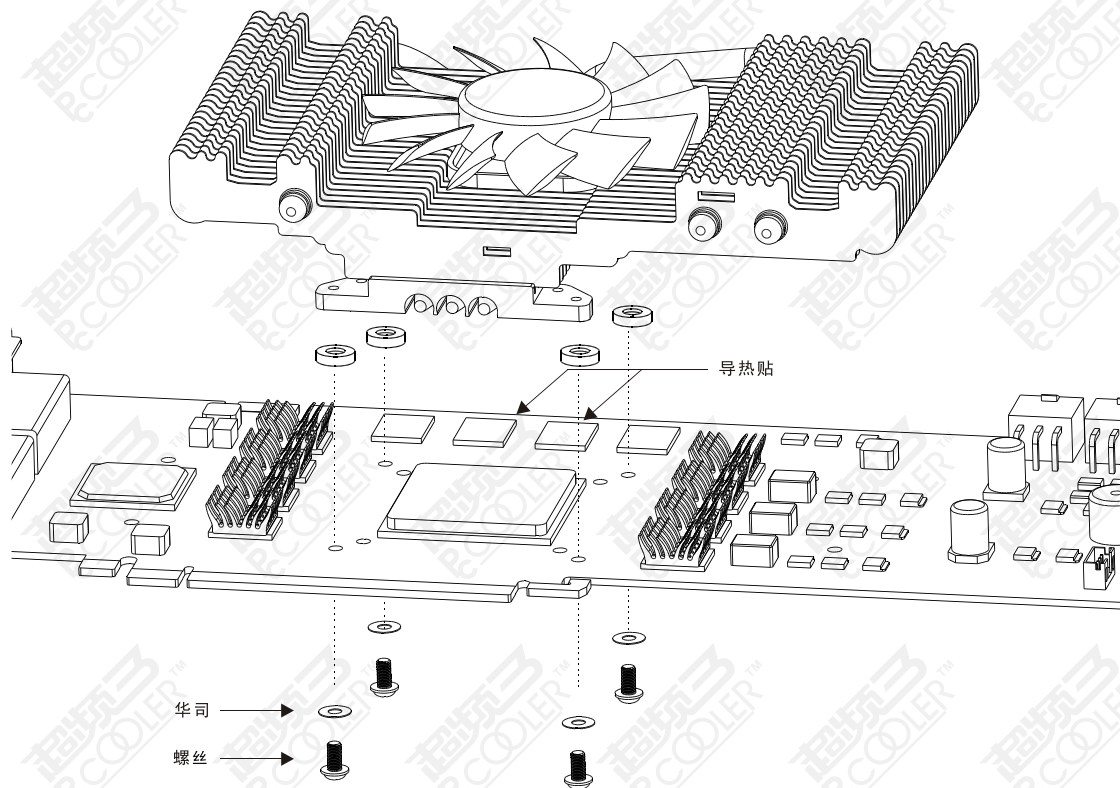
ATI X1600 系列  
ATI X1300 系列  
ATI Radeon 9\*\*\* 系列 (9550/9600除外)  
ATI Radeon X\*\*\* 系列  
NVIDIA GeForce4 MX 系列  
NVIDIA GeForce FX 5200  
NVIDIA GeForce FX 5500  
NVIDIA GeForce FX 5600(FX 5700)  
NVIDIA GeForce 6600 系列(除6600 AGP 系列)

## COMPONENTS

- ① 散热器 (实物与图样若有差异, 以实物为准)
- ② 螺丝\*4
- ③ 胶垫\*4
- ④ 华司\*8
- ⑤ 显存散热片\*10
- ⑥ 转换接头(选配)
- ⑦ 导热贴\*2
- ⑧ 导热膏



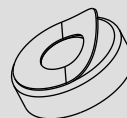
# 安装说明



撕掉显存散热片  
底部贴纸



安装前撕掉  
胶垫底部贴  
纸, 把胶垫  
贴在相对  
应的孔位。



## >>> 选择风扇状态

