



# SPD6105T

# Update Information

**Philips DVD Rewriter** update information

# Table of contents

- Table of contents ..... 2
- 1. For which products? ..... 3
- 2. What has been changed? ..... 3
- 3. More information..... 3
- 4. How to update my drive? ..... 4
- 5. Updating troubleshooting and FAQ ..... 5

# 1. For which products?

Type: (Drive type number on label)	SPD6105BD/10 SPD6105BD/97 SPD6105BM/00
String: (Drive name as seen in Windows <sup>TM</sup> )	SPD6105T
From firmware:	PI.x
To firmware:	PI.I

# 2. What has been changed?

Initial release PI.0

- Released on October 2007.

Changes from PI.x to PI.I

- Released June 2009.
- Improvements for better mounting of CD-R.

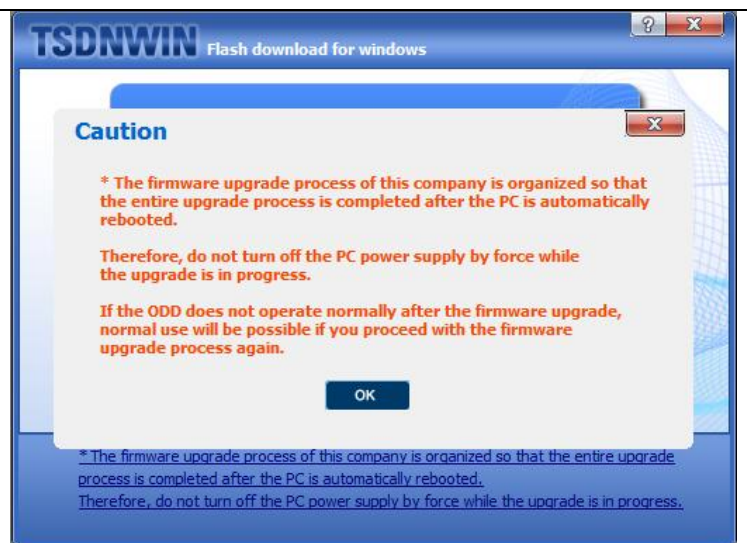
# 3. More information

More information and Frequently Asked Questions can be found on our website:

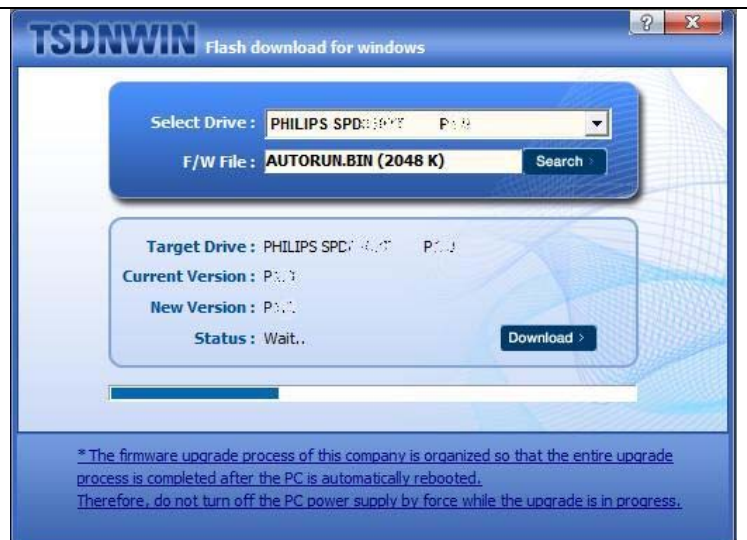
<http://www.philips.com/storageupdates>

## 4. How to update my drive?

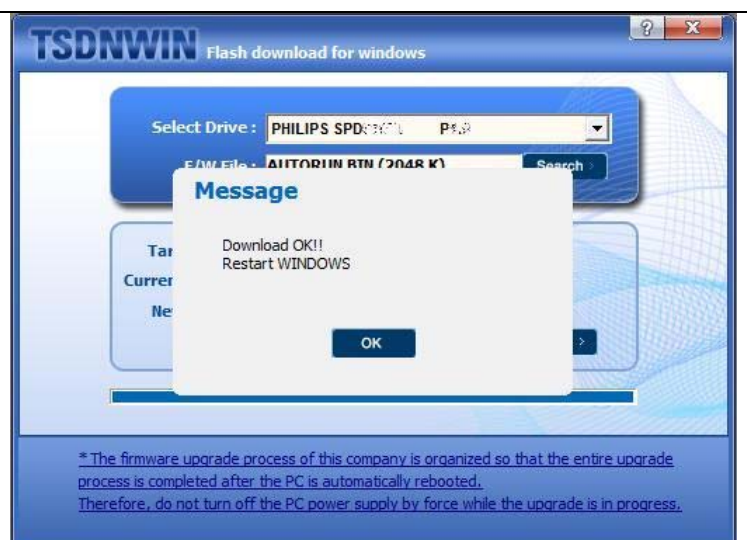
- 1 Start the Update Tool you downloaded.  
Click "OK"



- 2 Your drive is being updated.  
Do not interact with the system.



- 3 Your drive has been updated.  
Click "OK" to exit the update program.



# 5. Updating troubleshooting and FAQ

## Which precautions should I take before updating?

- Please close all running software applications.
- Temporarily disconnect from the Internet and shutdown antivirus programs.
- Eject any discs from the drive you want to update.
- As long as the updating process is ongoing, do not interact with the PC.
- Do not try to update with any version, which is not officially released by Philips.

## Do I loose my warranty when I update my drive?

No, as long as you follow our precautions and as long as you only use official updates for your product.

## How long does updating take?

Normally, it takes only a minute to update your drive.

It is possible that the updating tool requires a restart of your system before updating.

If updating takes only some 2 or 3 seconds, it did not work well. Check the update information document if there are limitations.

## Do I have to restart my system after updating?

If required, the updating tool will ask you to restart (reboot) your system, to make sure your drive will work fine after updating.

## Windows™ says if found new hardware after updating. Is this correct?

Yes, Windows™ may see your drive has been updated, and will therefore show the “New hardware found”. This screen will disappear after some seconds..

## The update tool does not work or reports that the file was damaged

The update tool checks itself before updating starts. If an error occurred during downloading the update file, this will be detected and the tool will refuse to work. Download the update file again.

## The update tool reported “Invalid firmware version” (or similar). What now?

You probably selected the wrong update.

Go to [www.philips.com/storageupdates](http://www.philips.com/storageupdates) and install the Philips Intelligent Agent to receive automatically the correct downloads for your Philips drive.

## The update tool reports administrator privileges are required

Updating the firmware of many (but not all) optical drives is a task which requires administrator privileges. Please switch to a user which has administrator privileges.



© 2009 Koninklijke Philips Electronics N.V.  
All rights reserved.