

WAVE TO SMAF Converter

WSC-MA2

Users Manual

Ver. 2.1.0 (Windows Version)

Ver. 1.0.0 (Macintosh Version)



<Contents>

Introduction ----- About WSC-MA2	4
1. Outline of WSC-MA2.....	4
2. About this Document	4
3. Terminology	4
Chapter 1 ----- Preparation before Use	5
1. Operation Environment.....	5
2. Setup	5
Chapter 2 ----- Basic Usage	6
1. Preparation of WAVE data	6
2. Start-up of WSC-MA2	6
3. Creation of SMAF	6
Step 1	6
Step 2	7
Step 3	7
Chapter 3 ----- Function Details.....	8
1. Main Dialog	8
2. Option Setting Dialog	8
3. Message Dialog.....	10
4. Version Information Dialog	10
Appendix	12
1. Error Message and Its Measures	12
2. FAQ.....	13

<<Revision>>

Ver.	Date	Description
1.0.0	2002/12/18	Newly released
1.1.0	2003/02/18	Description about the maximum size of input WAVE file was corrected.
2.0.0	2004/05/31	WAV file format was expanded AIFF format data was corresponded. Setup item of Save Enable Flag was added. Corrected so that SMAF is outputted in the play time limitation. Windows® 98SE was excepted from the cadidate for support.
2.1.0 (Win) 1.0.0 (Mac)	2004/08/02	Mac version was newly released

- Copyright of this document is the property of YAMAHA Corporation.
- Transfer or copying of this document in part or in whole requires the permission of Yamaha Corporation.
- The contents of this document are subject to change without notice.

Introduction ----- About WSC-MA2

1. Outline of WSC-MA2

WSC-MA2 is an application software that creates “Synthetic music Mobile Application Format” (SMAF) from the existing WAVE data (WAV/AIFF).

By using WSC-MA2, you can create your original ringing melody easily for mobile phone from WAVE data.

2. About this Document

This document is a user’s manual for WSC-MA2 and describes WSC-MA2 setup, basic usage, guideline for actual creation of SMAF, etc.

The document configuration is as follows. Please read from chapter that you need.

Setup Method -----→ Chapter 1 [Preparation before Use](#)

Try to Use -----→ Chapter 2 [Basic Usage](#)

Detailed Usage -----→ Chapter 3 [Function Details](#)

3. Terminology

File Name	Meaning
SMAF	Synthetic Music Mobile Application Format.
WAVE	In this document, it indicates wave data such as WAV or AIFF.
WAV	Microsoft WAV format audio data.
AIFF	Apple AIFF format audio data.

Chapter 1 ----- Preparation before Use

This chapter describes the required preparations before the use of WSC-MA2.

1. Operation Environment

WSC-MA2 operates in the following environment.

“Windows Version”

OS	Windows® 2000 or Windows® XP
CPU	Celeron® 400MHz or faster, or its compatible processor
Memory	64MB or more
Hard disk	10MB or more of disk space

“Mac Version”

OS	Macintosh OS-X ver.10.2 or later
CPU	Power PC TM G3 and later. 500MHz or faster
Memory	128MB or more
Hard disk	40MB or more of disk space

2. Setup

The installer program is not included in WSC-MA2. Please uncompress the acquired file to a suitable place. The uncompressed folder includes this manual and execution file.

Chapter 2 ----- Basic Usage

The ringing melody for mobile phone can be created easily if you use WSC-MA2. Here, we describe its usage using the actual flow as an example.

1. Preparation of WAVE data

In order to create SMAF by using WSC-MA2, it is necessary to prepare WAV file (*.wav) or AIFF file (*.aif) which fulfills the following conditions.

Format	: PCM
Sampling Frequency	: 4kHz to 48kHz
Number of Quantization Bit	: 8bit or 16bit
Number of Channel	: 1(monophonic) or 2(stereo)

WSC-MA2 can handle WAVE data up to 66 seconds of playback time. When WAVE data longer than 66 seconds was input, the data from the top to about 66seconds is output into SMAF.

2. Start-up of WSC-MA2



Double-click the icon of EXE file or its shortcut icon.

NOTE!!

WSC-MA2 can be also started from “Run” (Type the name of a program) and command prompt.

3. Creation of SMAF

Step 1



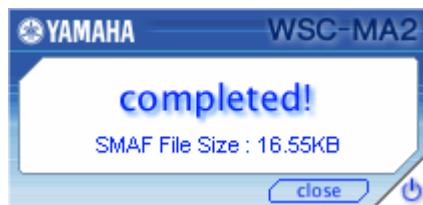
Drag and drop WAVE data on the main dialog displayed after start-up. Here, we show a procedure for creating SMAF from a file “CoolGuitar.wav” as an example.

Step 2

If WAVE data has no problem, then, “Information setting dialog” appears. In the initial state, a character string of which the extension was removed from the input file name is input as a title, so click the “ok” button, here.



Step 3



At the end of conversion a message dialog appears and the size of SMAF file is notified. SMAF file “CoolGuitar.mmf” is created in the same folder as original WAVE data.

NOTE!!

A SMAF file created by WSC-MA2 can be played back on your mobile phone by transferring it.

The SMAF can be also played back on your computer by using tools that you can download from [SMAF GLOBAL](#) web site, such as ATS-MA2, ATS-MA3, ATS-MA5 or MidRadio.

The operation flow of WSC-MA2 was explained so far. The general WAVE data can be converted by the same method. However, please pay attention to the following two points to create SMAF smoothly.

✓ *Does the WAVE data file fulfill the specified requirements?*

The WAVE data which does not fulfill the requirements shown in “[Preparation of WAVE data](#)”, cannot be converted by WSC-MA2. It is necessary to change the format by WAVE file edit software beforehand.

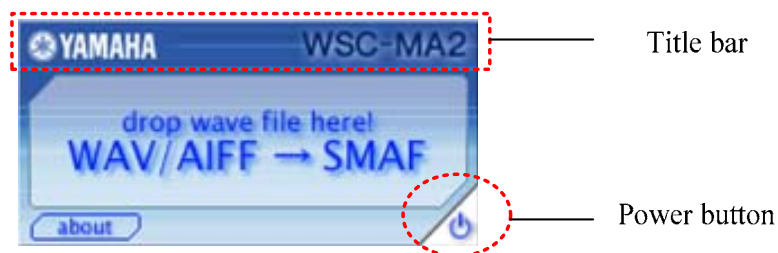
✓ *Please confirm the maximum file size which can be played on your mobile phone.*

The upper limit of file size which can be handled differs according to Carriers or mobile phone. Therefore, even if the SMAF is created from WAVE data which fulfilled the specified requirements, the file may not be able to be transferred to the mobile phones. Or even if the file can be transferred, it may be unable to be played. If the size exceeds your phone specification, please make its size smaller by adjusting the length of original WAVE data.

Chapter 3 ----- Function Details

The basic operation method and its flow were explained in Chapter 2. The details of specification and function of individual dialog that constitute WSC-MA2 are described here.

1. Main Dialog



This dialog is displayed first after the startup of WSC-MA2.

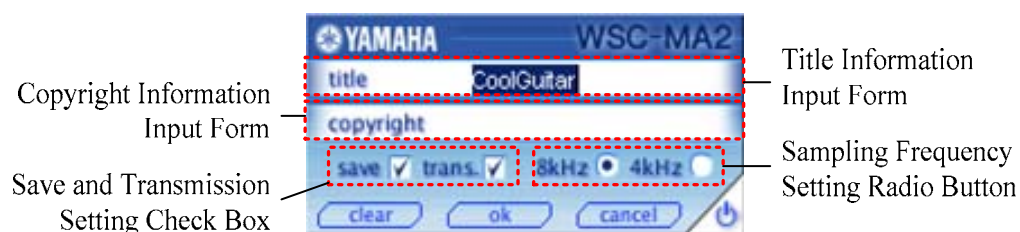
WAVE data can be input by dropping on the icon.

From the “about” button, the Version information dialog can be called.

And, the common functions for all dialogs are as follows.

- Movement of the dialog by dragging the Title bar.
- Termination of WSC-MA2 by the Power button.

2. Option Setting Dialog

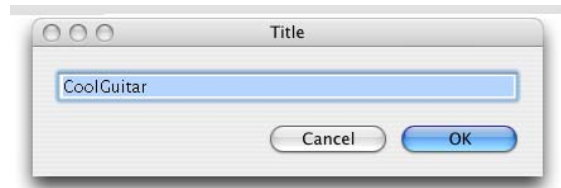


The dialog is displayed when the WAVE data which was dropped on the main dialog fulfills the conversion requirement. In this dialog, you can edit various option information which are included in SMAF.

□ **Title Information Input Form**

Input the title information to add to SMAF. In the initial condition, the character string after removing the extension from the input file name is set.

In the Macintosh version, the following dialog is displayed when clicking the “Title” part.



□ **Copyright Information Input Form**

Input the copyright information to add to SMAF.

In the Macintosh version, a different dialog is displayed like the above “Title” when clicking “Copyright Information” part.

□ **Copy Status Setting Check Box**

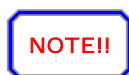
save : Whether to make the saving restriction to a mobile phone is set. When checked, the saving is enabled.

trans. : Whether to make the secondary transfer from a mobile phone to a mobile phone is set. When checked, the transfer is enabled.

□ **Sampling Frequency Setting Radio Button**

Set the sampling frequency for storing WAVE data into SMAF.

Settable Items differ according to the inputted WAVE data.



Commonly, when lowering the sampling frequency, the data size becomes smaller but its sound quality deteriorates.

When you press the “clear” button, the input information of edit box is cleared.

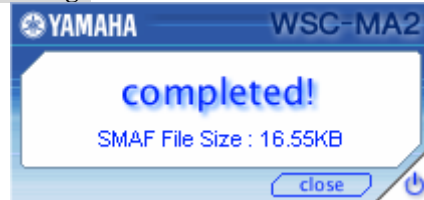
When you press the “ok” button, the input information is fixed and the conversion processing into SMAF starts.

When you press the “cancel” button, the input information is canceled and it returns to the main dialog.

3. Message Dialog

2 kinds of message dialog exist according to the displayed situation.

☐ **Complete Message**



The message that the conversion was completed normally is informed.
And, the outputted SMAF size is displayed.

☐ **Error Message**



A message that some kind of error occurred in the process is informed. An error message corresponding to the part that caused the error is displayed. The above image is an example of a case that has problem in the inputted WAVE data.

NOTE!!

Refer to “[Error Message and Its measures](#)” of Appendix for the details and measures of the displayed error message.

In each case, when you press the “close” button, it returns to the main dialog.

4. Version Information Dialog



The version of WSC-MA2 can be confirmed. And when you click the URL written in blue, [SMAF GLOBAL](http://smaf-yamaha.com) is opened.

When you press the “close” button, it returns to the main dialog.

About “Macintosh Version”

When activating the WSC-MA2, the following menu bar is displayed on the upper part of the display.



◆ WSC-MA2 MENU

① About WSC-MA2

The following application information is displayed when selected.



② Hide WSC-MA2

Close the WSC-MA2 dialog display.

③ Hide Others

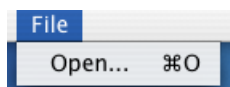
Close applications except the WSC-MA2.

④ Quit WSC-MA2

Terminate the WSC-MA2.

◆ File MENU

① Open



Display the file selection dialog, and then open an audio file.

Appendix

Convenient information for using WSC-MA2 are described here.

1. Error Message and Its Measures

If an error occurs on the way of conversion, the following message is displayed.

Error message	Cause and main measures
Cannot open WAV / AIFF file	The read of its WAVE data is not permitted or it is used already on the other application software. Please confirm the file attribute and check whether other application is using the WAVE data.
Extension is not .wav / .aif	Didn't you input a file except WAV/AIFF? Is the extension of the file correct? Please confirm the inputted file name.
File name length exceeds limit	The absolute path of inputted file exceeds the limitation of number of characters. Please move the file to upper hierarchy, or shorten the name of the folder and the file.
Audio format not supported	The inputted WAVE data is neither WAV nor AIFF.
Sampling Frequency not supported Bits per sample not supported Channel count not supported	The inputted WAVE data does not fulfill the conversion requirement. Confirm the format by referring Chapter 2 " <u>Preparation of WAVE data</u> ".
Inadequate playtime	WSC-MA2 cannot handle the WAV file whose replay time is less than 20msec. Please prepare the file whose playback time is longer than 20msec.
Cannot save to SMAF file	A file with the same name may exist in read only. Or the write to folder may not be permitted. Please confirm the attribute of folder and file.
Disk space not enough	Converted data can not be saved because disk capacity is insufficient.
Audio format not supported	File name cannot be converted because character codes used in the designated file name are different from the setting of the operation environment.

2. FAQ

- Q** I dropped some WAVE data to WSC-MA2, but only one SMAF file can be created.
- A** Only one WAVE data can be inputted at one time. When you select and drop two or more files, only one file which is under the mouse cursor becomes the target of conversion. When you would like to create multiple SMAF files, it is necessary to convert WAVE files one by one.
- Q** I created a new SMAF file, but files created before cannot be seen.
- A** The outputted file name of SMAF file becomes the same, but the extension of WAVE data is replaced to “.mmf”. When the SMAF file of same name has already existed, it is overwritten and saved. Therefore, for the important SMAF, it is necessary to change that name or move to another folder beforehand.
- Q** The characters run over the window and its layout looks worse.
- A** Please set the font size to “small font” by using the display property. It cannot be displayed nicely in the font sizes excepting “Normal size (96dpi)”.