

## Firmware Update Instructions

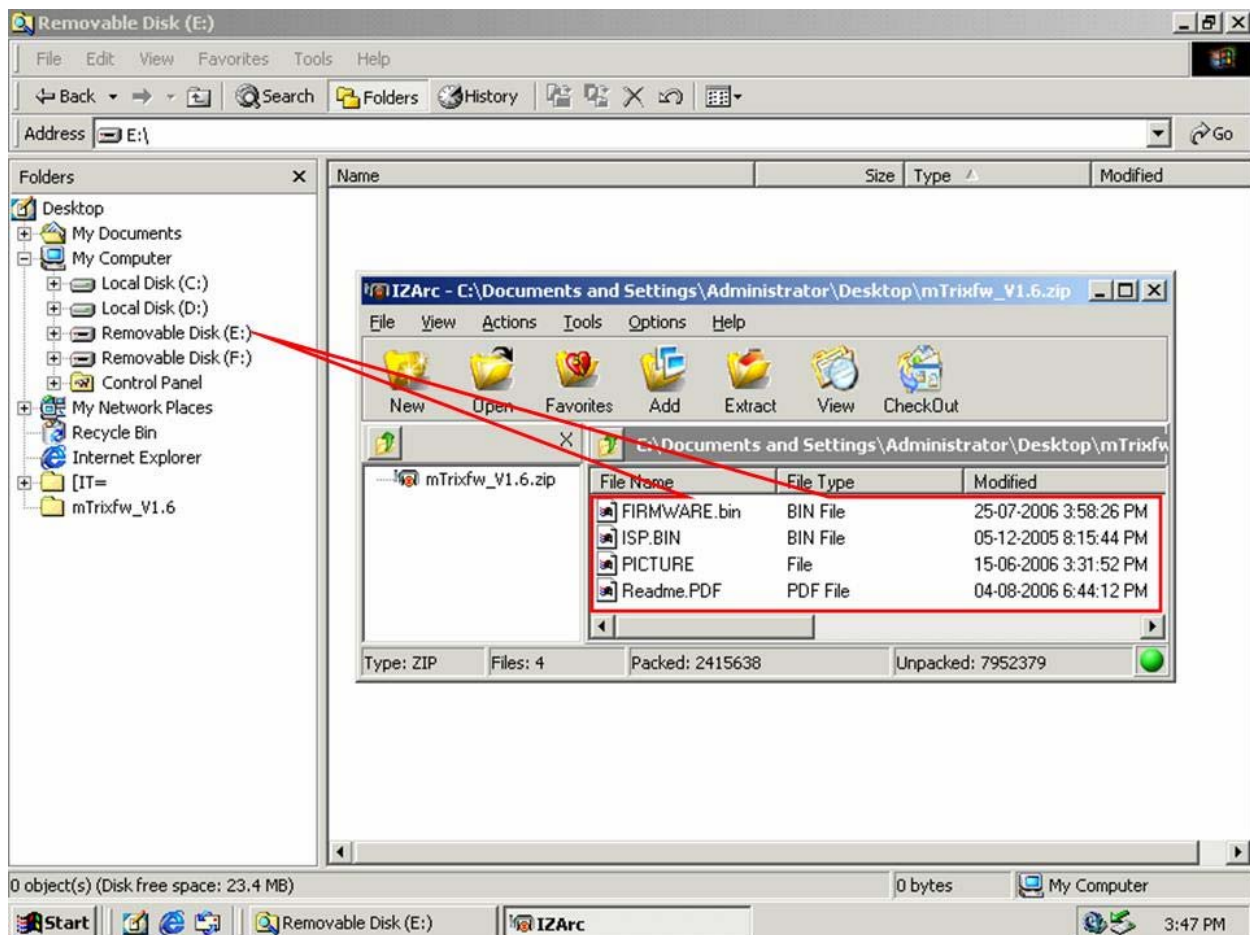
### WARNING!

Please connect your mTrix™ to the AC adapter throughout the firmware upgrade process as termination of power during the firmware upgrade process may severely damage mTrix™.

There are 4 steps to the upgrade process: 1. Unzip 2. Software upgrade 3. UI upgrade 4. Firmware upgrade confirmation

#### ● Step1: Unzip

Unzip the file "mTrixfw\_V1.6.zip" to mTrix™ built-in memory.



- **Step2: Software upgrade**

This step upgrades the internal softwares built into your mTrix™

Press the power button to turn on mTrix™ and choose “Setting” in the main menu.



Select “System Update” and choose yes.

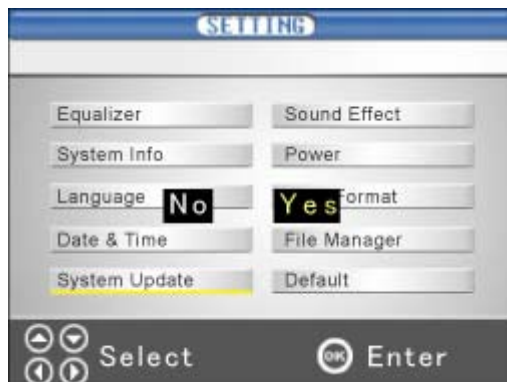
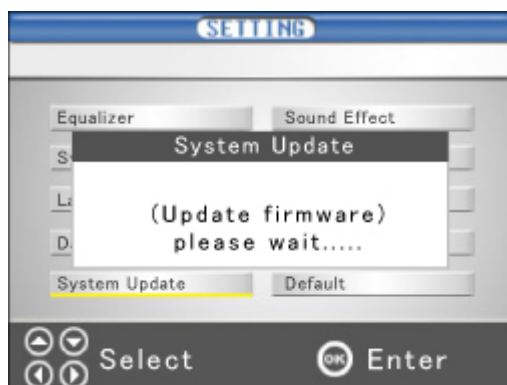


Illustration below shows the updating dialogue (update firmware). Once updated, the device will shut down automatically.



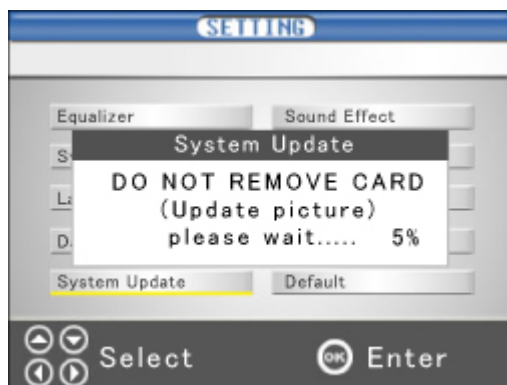
- **Step3: UI upgrade**

This process upgrades the User Interface (UI) in your mTrix™

Press the power button to turn on mTrix™ and choose “Setting” in the main menu.

Select “System Update” and choose yes.

Illustration below shows the firmware updating dialogue (update picture). The Device will shut down automatically when upgrade completes.



- **Step4: Firmware upgrade confirmation**

Reboot again and check the firmware version at “Setting->System info”.

